

LT-Y-136-174-11.2

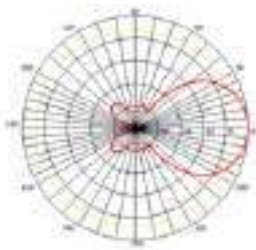
Yagi Antenna | 136-174 MHz | 11.2 dBi

Features

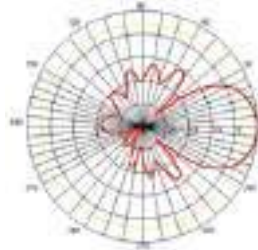
- High Gain, F/B Ratio
- Vertical or Horizontal
- Long Distance Communication, Anti-Jamming
- High Quality Aluminum Alloy Material
- All Weather Operation
- Extend a Low Loss Cable



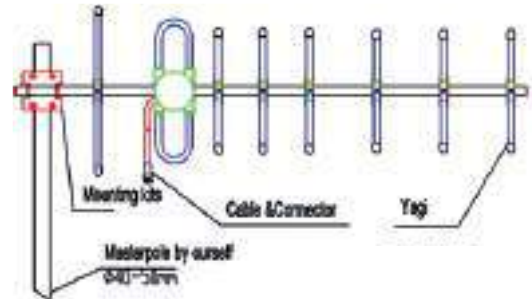
Reference Patterns



E-Panel



H-Panel



Specifications

LT-Y-136-174-11.2	
Frequency Range	136-174 MHz
Antenna Gain	11.2 dBi
Max Power	100 W
Impedance	50 Ω
VSWR	≤ 1.5
Polarization	Vertical or Horizontal
Beamwidth	V:40° H: 44°

LT-Y-136-174-11.2	
Termination	N Female or Customized
Dimensions Length	1.5 m (may vary with frequency)
Weight	1.0 Kg (may vary with frequency)
Elements	8
F/B Ratio	≥ 16 dB
Pole Diameter	Φ 40 mm - 50 mm
Bandwidth	10 MHz

