

# LT-Y-400-420-11.2

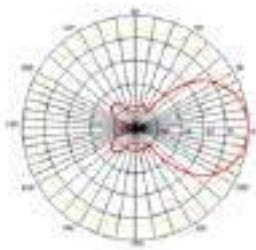
Yagi Antenna | 400-420 MHz | 11.2 dBi

## Features

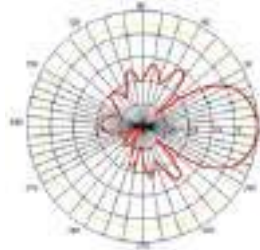
- High Gain, F/B Ratio
- Vertical or Horizontal
- Long Distance Communication, Anti-Jamming
- High Quality Aluminum Alloy Material
- All Weather Operation
- Extend a Low Loss Cable



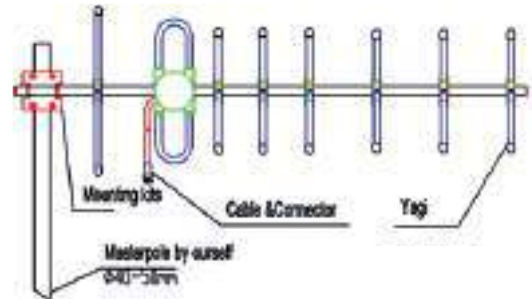
## Reference Patterns



E-Panel



H-Panel



## Specifications

LT-Y-400-420-11.2	
Frequency Range	400-420 MHz
Antenna Gain	11.2 dBi
Power Rating	100 W
Impedance	50 $\Omega$
VSWR	$\leq 1.5$
Polarization	Vertical or Horizontal
Beamwidth	V:40° H: 44°

LT-Y-400-420-11.2	
Termination	N Female or Customized
Dimensions Length	1.5 m (may vary with frequency)
Weight	1.0 Kg (may vary with frequency)
Elements	8
F/B Ratio	$\geq 16$ dB
Pole Diameter	$\Phi$ 40 mm - 50 mm
Bandwidth	15 MHz

