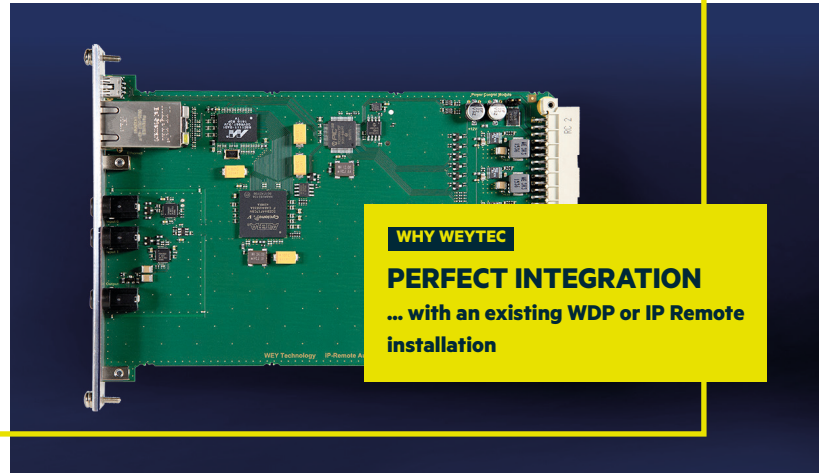


INTEGRATION

IP Remote Audio Mixer

Audio Mixer for KVM solutions



WHY WEYTEC

PERFECT INTEGRATION

... with an existing WDP or IP Remote installation

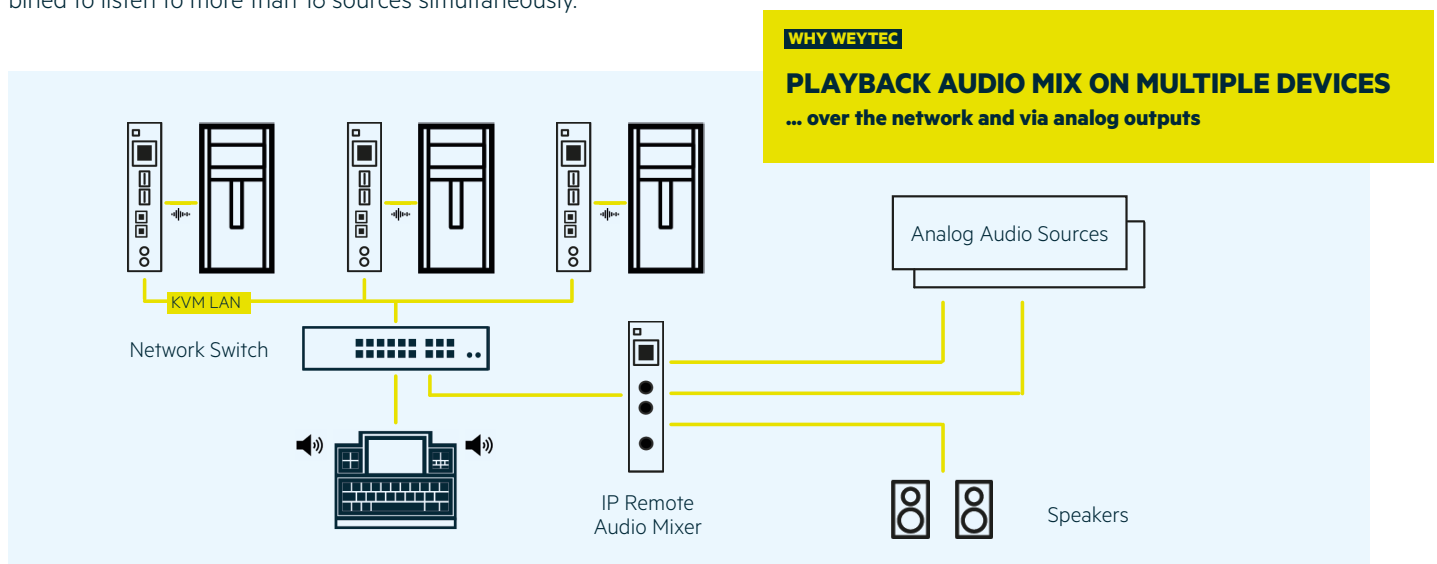
The IP Remote Audio Mixer combines up to 16 digital and 2 analog audio signals into one mix. The resulting IP Remote audio stream is available across the network as an input to multiple KVM receivers, a smartTOUCH console or additional audio mixers combining additional source signals.

The audio stream is also available as an analog signal on the card's line-out interface, where it can be directly connected to speakers or headphones.

- Mixes IP Remote audio signals and analog audio inputs
- Full integration with WDP
- Perfect addition to smartTOUCH keyboards supporting more than 4 audio channels
- Digital output as IP Remote audio signal
- Analog output via line out interface
- Volume control and left/right channels adjustable for each signal
- Can be installed at the desk, in the system room or wherever playback is required
- Compatible and integrated with WEYTEC products and solutions

Application example: IP Remote Audio Mixer provides a mix for multiple output devices

Each Audio Mixer accommodates up to 16 IP Remote transmitters and 2 analog audio sources. Multiple Audio Mixers can be combined to listen to more than 16 sources simultaneously.



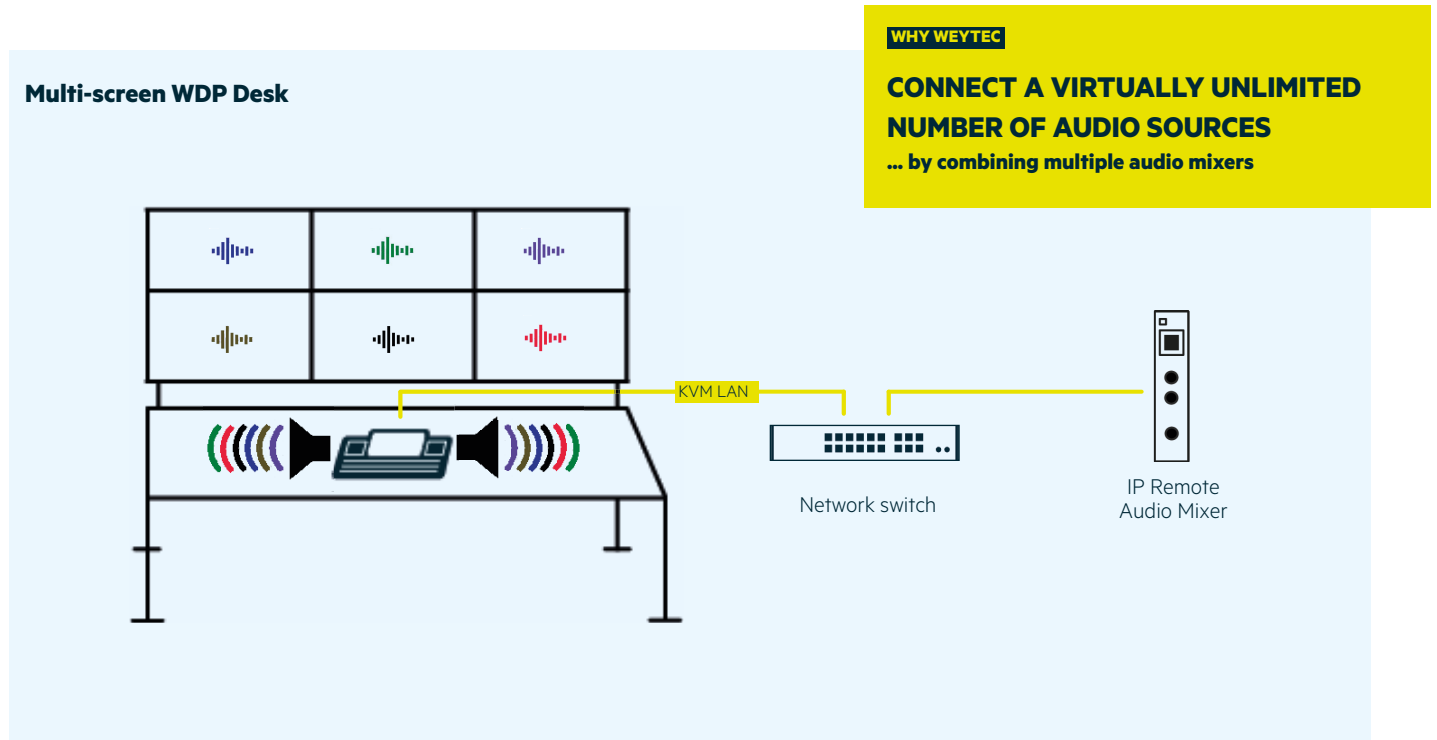
WHY WEYTEC

PLAYBACK AUDIO MIX ON MULTIPLE DEVICES

... over the network and via analog outputs

Application example: IP Remote Audio Mixer in combination with the WDP and smartTOUCH keyboard

The IP Remote Audio Mixer can be used to simultaneously playback all sources displayed on a WDP desk.



Available products

IP Remote Audio Mixer

Product No. 21100



Input	2 x 2.5" jack line in stereo 48KHz 16-bit, 16 x digital in stereo 48KHz 16-bit (IP Remote)
Output (Mix)	1 x 3.5" jack line out stereo 48KHz 16-bit, 1 x digital out stereo 48 KHz 16-bit (IP Remote)
Ethernet (SFP)	1 Gbit via copper
Mounting	Chassis and Boxes